



SYM-PAC

Inventory

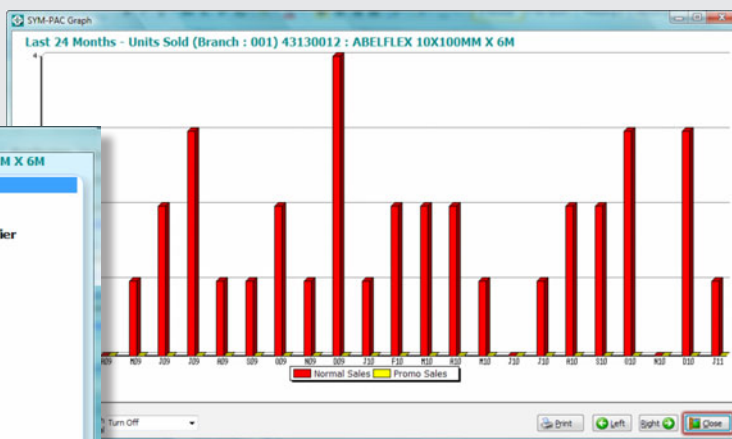
Features + Benefits

- Gain full control over your stock to maintain accurate inventory
- A complete Stock History on every item sold can be retained
- Easily identify stock movement trends so that you can act quickly to minimise dead stock

+ More Features

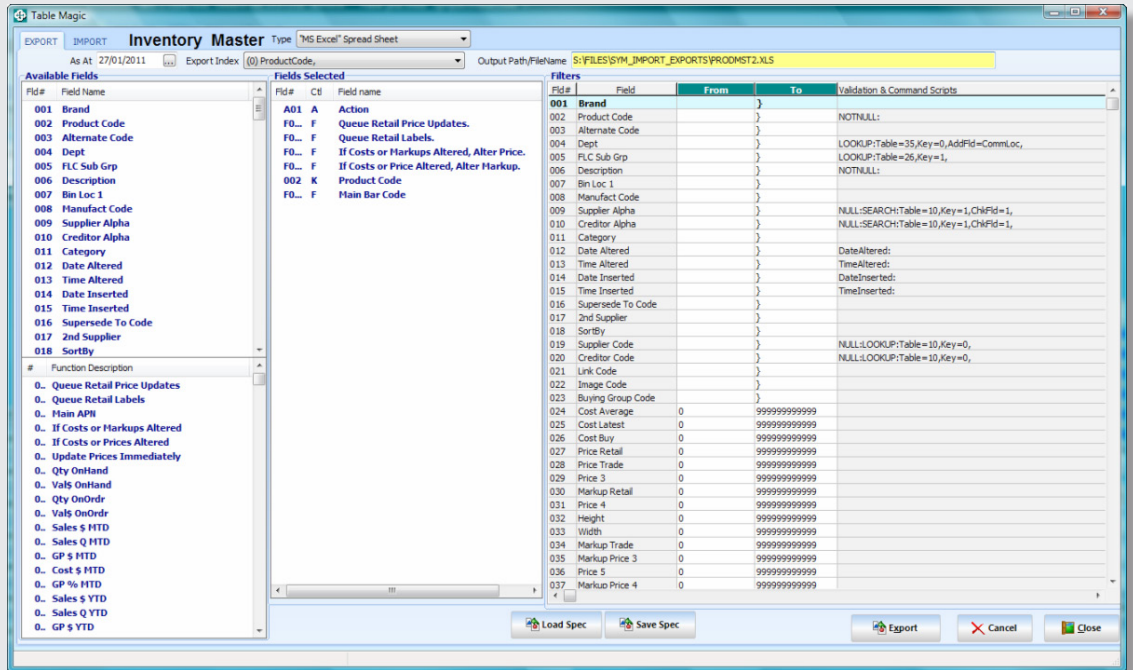
- Forward pricing to ensure that new prices are taken into account when appropriate, and allows you to pre-set increases in cost and retail — and is updated as part of the End of Day
 - Includes several pricing structures:
 - 5 standard product-based selling prices
 - Quantity pricing for all selling prices
 - Maximum discount allowable can be set by product, or globally
 - Maximum profit by department / categories can be set with warnings at POS — which can, in turn, be printed to a variance report
 - Set store-wide clearance sale discount percentages
 - Contract prices by customer and by date range
 - Discounts by customer and product department, FLC & Family
 - Catalogue pricing with automatic date reset to standard pricing
 - Catalogue reporting clearly indicating sales vs purchases, gross profit, cash flow effect and stock remaining
- ## + More Features
- The ability to load promotions and pricing directly from Buying Group
 - Access to data from promotion disks or from on-line communications established by the Buying Group
 - Conversion factors can be used where products are bought and sold in different units of measure, eg. Items purchased by roll but sold by the metre, or rack/pack, timber lineal metres or cubic metres, etc.

Qty Pricing	Des M/Up%	Act M/Up%	Sell Inc	Sell Ex	GST \$	Avg GP%	Avg GP \$	Net GP%	Net GP \$
Retail	77.53	86.82	16.99	15.45	1.54	46.15	7.13	46.15	7.13
Chelsea	0.00	0.00	0.00	0.00	0.00	0.00	0.00	0.00	0.00
Sorrent	0.00	0.00	0.00	0.00	0.00	0.00	0.00	0.00	0.00
Price 4	0.00	0.00	0.00	0.00	0.00	0.00	0.00	0.00	0.00
RRP	0.00	0.00	0.00	0.00	0.00	0.00	0.00	0.00	0.00



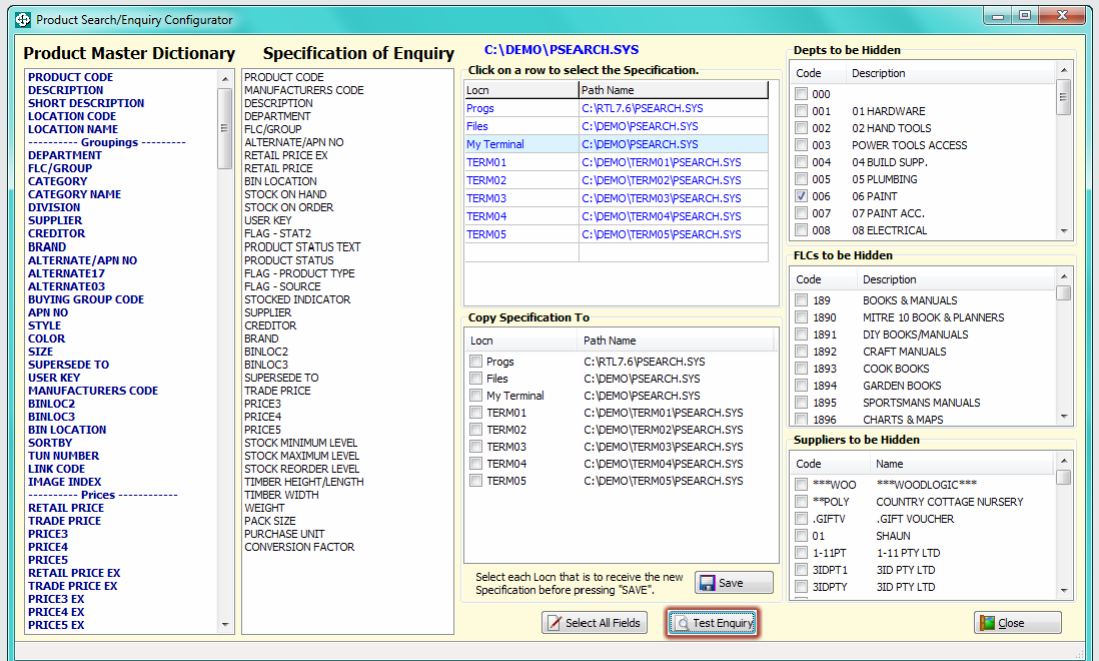
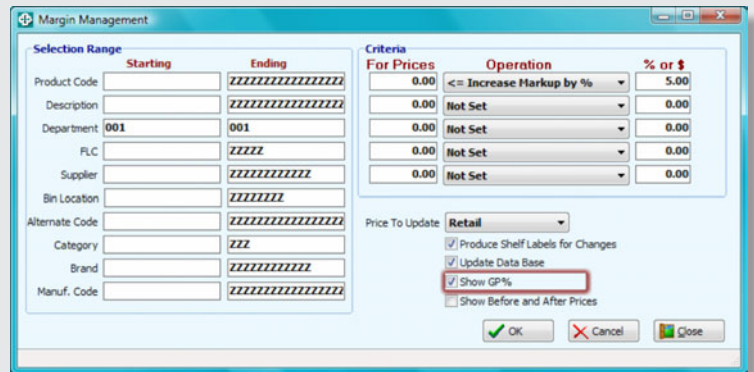
+ More Features

- Many different usage types are available for the system to deal with different types of products appropriately
- Ability to automatically generate next available Stock Code number for goods without a suppliers code. This facility will also generate an APN for those products which do not possess one — allowing all products to benefit from the use of barcodes.
- Stock fields for Timber include Height, Width and Pack Quantities — allowing easier inventory management decision making.
- Automatic generation of stock records using the portable barcode readers linked to the supplier details.
- Export/Import facilities allow the easy manipulation of product data in bulk, eg. A cost price rise from a supplier with Sell Price level recalculation. This will also prompt for the generation of labels when changes are made.



+ More Features

- For multiple store situations you can view up to 998 satellite branch stores, and your warehouse details.
- Stock On Hand, On Order and Available details can be easily shared across locations — reducing the need for costly inter-store queries.
- Ability to integrate with POS, Debtors, Creditors, Purchase Ordering, Receipts, and General Ledger — reducing data entry
- New SYM-PAC Product Search Configurator function — create powerful custom searches for different users or different terminals or different departments. Comprehensive filtering lets users design custom searches for specific store needs.



SYM-PAC Solutions

Sales 1800 796 722 | www.sympac.com.au

we listen

we innovate

we deliver

Solutions to
get on with
business

